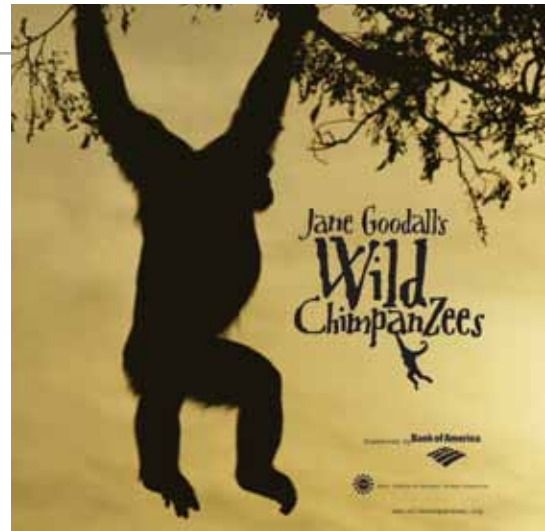


# Jane Goodall's Wild Chimpanzees

Large Format IMAX® Film (2002)

*Jane Goodall's Wild Chimpanzees* is a giant screen journey into the world of wild chimpanzees with the world's most famous field researcher, Dr. Jane Goodall.

The film chronicles Dr. Goodall's more than 40 legendary years of work among the chimps of Gombe Park on Lake Tanganyika in Africa. Viewers are led by Dr. Goodall and a new generation of young researchers into the daily lives of the now famous Gombe chimp families: Fifi, her sons Freud and the turbulent alpha male Frodo, along with Gremlin, Gaia, and the endearing Galahad.

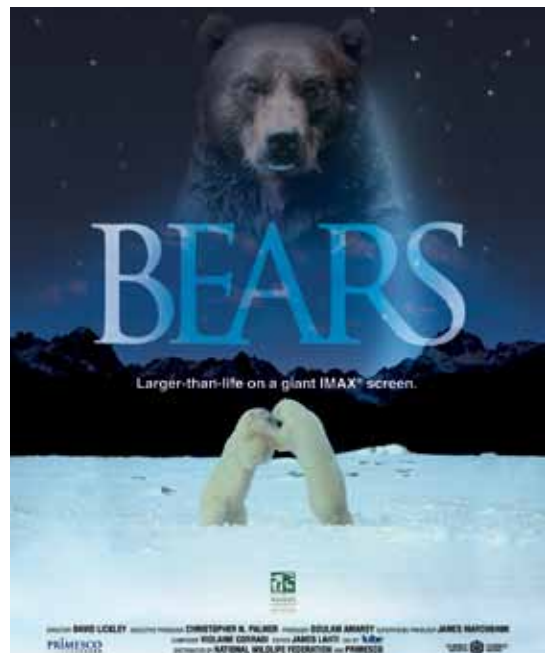


# Bears

Large Format IMAX® Film (2001)

*Bears* brings to the giant screen one of the most awe-inspiring, dramatic and threatened predators in all of Nature. Paradoxically, bears have also always endeared themselves to humans with their unmatched cuddliness and comical charm.

Shot in some of the most pristine settings on the planet, this film tells the story of the last three remaining species of North American bears. *Bears* was co-produced by the National Wildlife Federation and Science North.



# Gold Fever

Large Format IMAX® Film (1999)

*Gold Fever* tells the story of a wilderness prospecting journey, interweaving the drama of the historic Klondike Gold Rush with exotic side trips to Thailand, India and Africa to document the cultural, economic and historical significance of gold.

